

Payment Methods

Pre-Authorized Tax Payment Plan

The City of Dryden offers two convenient pre-authorized payment plan options:

1. **11 month Plan:** annual taxes owing are withdrawn over 11 months, from Jan to Nov.
2. **Installment Plan:** annual taxes owing are withdrawn 4 times per year on the installment due dates.

By Mail

Please attach your cheque to the payment stub provided when mailing your payment.

At City Hall

Tax bills can be paid at the cashier counter located at City Hall. Payment can be made using a debit card, cheque or cash. There is an outside payment box located at the front of City Hall to the left of the front doors.

Internet Banking

Payments can be made using personal online internet banking. Your roll number is required, please call 223-1110 for details. Service charges from your financial institution may apply.

Visa/Mastercard

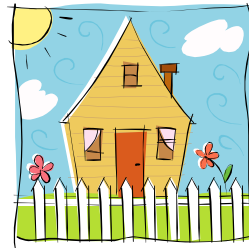
Payment by credit cards can be made online at <https://ipn.paymentus.com/otp/stdc/codo>. Note: Paymentus does charge a fee for this service.

Late Charges

Penalty and interest is charged on overdue taxes at the rate of 1.25% per month, (15%) per year as authorized by Section 345 of the Municipal Act. These charges are added to overdue accounts on the 1st day of default and on the 1st of each month thereafter.

2011 RESIDENTIAL TAX ALLOCATION

For every \$100,000 in assessed value of **residential** property in Dryden it would have property taxes in 2011 totaling \$1,557 with the following break-down:



Education Tax

\$231 or 15%

City Services

\$1,326 or 85%

Mayor & Council	\$ 18.90
General Administration	278.33
Police	95.56
Fire & Emergency Prep	83.56
Public Works	177.44
Community Services	205.33
Community Dev & Planning	16.08
Museum	15.52
Library	39.50
Cemetery	9.45
Airport	46.04
Outside Boards & Agencies	340.72
(includes KDSB, Home for Aged, Northwest Health Unit)	



2011

Property Tax Information

City of Dryden
30 Van Horne Ave
Dryden, ON
(807) 223-2225
City Hall Office Hours:
8:30 a.m. to 4:30 p.m.
Monday to Friday

Your Property's Current Value Assessment

The assessed value of your property is used as the basis for calculating your property taxes. The Municipal Property Assessment Corporation (MPAC) is responsible for accurately valuing and classifying properties in Ontario.

Appeal Process for your Assessment

MPAC classifies and assesses all properties in Ontario under the Assessment Act and regulations established by the Provincial Government.

You may contact MPAC toll free at 1-866-296-6722 to discuss your assessment or verify details about your property.

Requests for Reconsiderations

Find out about reconsiderations on the MPAC web site at www.mpac.ca or by calling their toll free number at 1-866-296-6722.

Assessment Appeals and the Assessment Review Board (ARB)

Find out about assessment appeals on the ARB web site at www.arb.gov.on.ca or by calling 1-800-263-3237.

2011 Municipal & Education Tax Rates (shown as a %)

How to Calculate your 2011 Property Taxes:

Property Classes	Municipal Tax Rate (1)	Education Tax Rate (2)	2011 Total Tax Rate = (1+2)	2010 Total Tax Rate (for comparison)
Residential	1.326440	0.231000	1.557440	1.548466
Multi-Residential	2.599955	.0231000	2.830955	2.803764
Commercial— Occupied	2.391572	1.330000	3.721572	3.787361
Commercaill— Vacant Land	1.674100	0.931000	2.605100	2.651153
Broad Industrial— Occupied	2.174480	1.330000	3.504480	3.606256
Broad Industrial— Vacant Land	1.413412	0.864500	2.277912	2.344066
Large Industrial— Occupied	3.601542	1.330000	4.931542	5.034484
Large Industrial— Vacant Land	2.341002	0.864500	3.205502	3.272415
Pipeline	1.855159	1.330000	3.185159	3.253735
Farmland & Managed Forest	0.331610	0.057750	0.389360	0.387117

(phase-in current value assessment x total tax rate) = 2011 Property Taxes Due for the Year

(\$100,000 x 1.557440%) = \$1,557.44 for a residential property

2011 Property Tax Installment Dates:

February 28, March 31, August 31 and September 30th