



DRYDEN'S NEW OUTDOOR VENUE

DESIGN PACKAGE

DECEMBER 2023

TABLE OF CONTENTS

PROJECT BACKGROUND	3
COMMUNITY-INFORMED DESIGN DIRECTIONS	4
DESIGN PROGRAM	5
CONTEXT PLAN + SPATIAL MAPPING	6
CONCEPTUAL DESIGN PLAN	7
CONCEPTUAL DESIGN	8
SEASONAL PROGRAMMING	9

PROJECT BACKGROUND

A PLACE TO CONNECT, GATHER, AND CELEBRATE!

LOCATION



The City of Dryden is currently developing an outdoor event venue at the intersection of Earl Avenue and Duke Street.

VISION STATEMENT

The new outdoor venue in Dryden will be a **dynamic, welcoming gathering space** that **activates the downtown** and **celebrates the city's authentic and unique identity**.

The project follows the central principle determined by the City of Dryden:

"The City of Dryden seeks to ensure all public spaces embrace a spirit of truth and reconciliation and are accessible and inclusive for all people."



COMMUNITY-INFORMED DESIGN DIRECTIONS

8 DESIGN DIRECTIONS

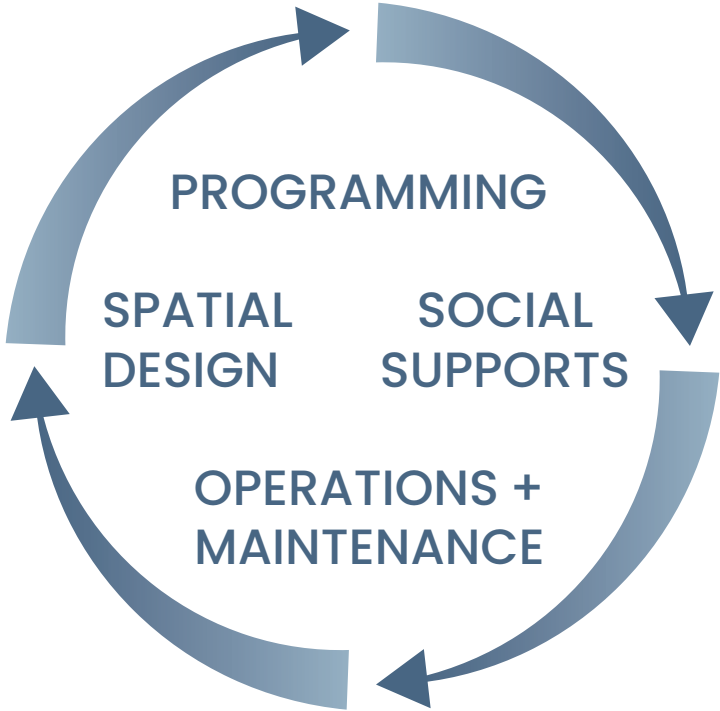
The following design directions were developed by the project team as a result of feedback heard during Engagement Event #1, the Focus Group, and the Key Interviews. These directions guided the choices made during site design.



DESIGN PROGRAM

Site Program Informed by Design Directions:

Based on the design directions, the following detailed programming elements were chosen to influence the schematic design concept.



“PAAWIDIGONG”

The Anishinaabe are the original caretakers of this land and call this place by the Ojibwe name “Paawidigong”, meaning “place of the rapids” which is now known as Dryden.



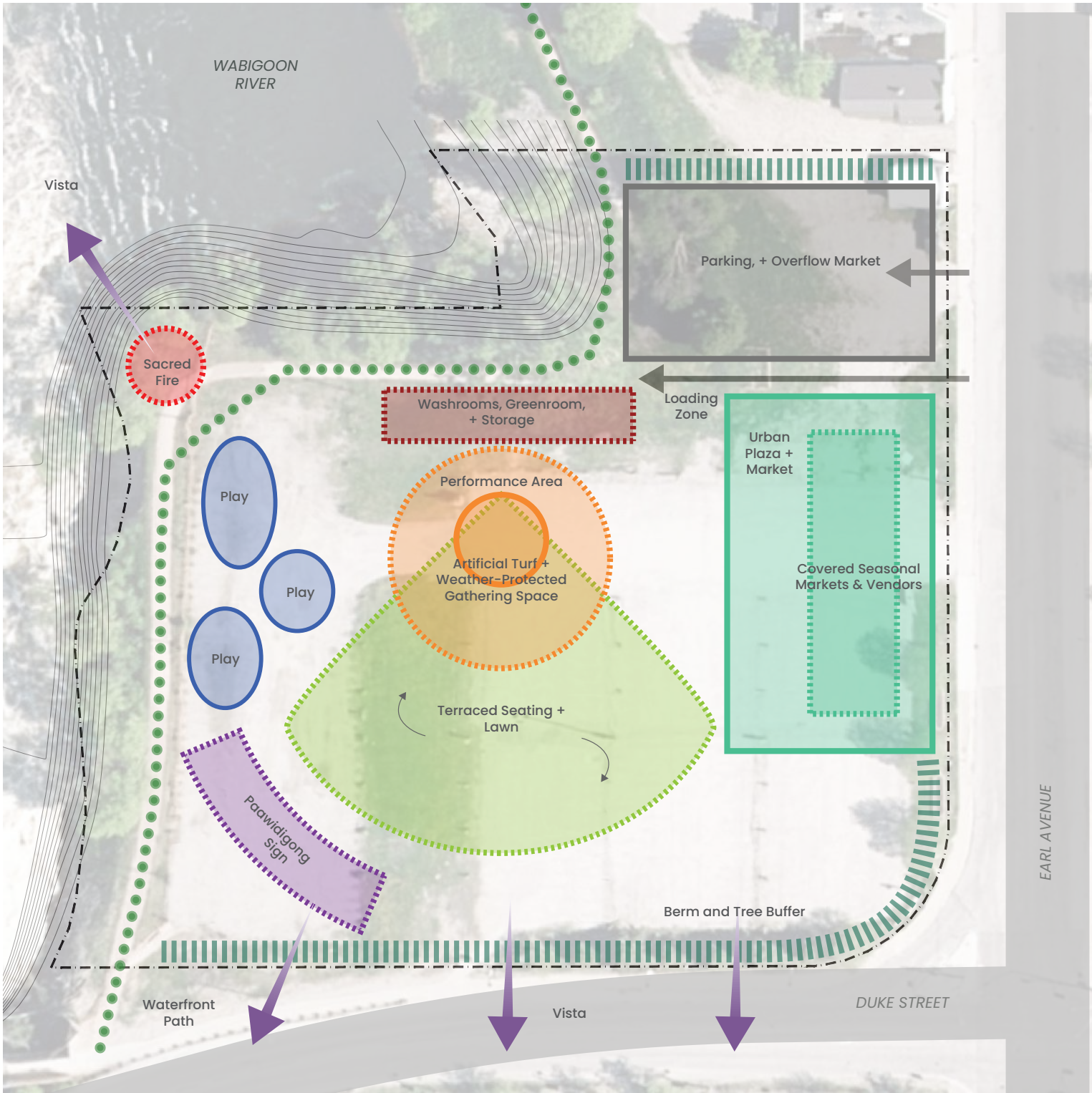
CONTEXT PLAN + SPATIAL MAPPING



Vista of Wabigoon River rapids



Vista of Wabigoon River to the south



CONCEPTUAL DESIGN PLAN



CONCEPTUAL DESIGN



Urban plaza and covered market provide flexible use and expansion opportunities.



Multi-use central terraced lawn with weather-protected event space.



Artificial turf extends all-season activities; flooded for winter skating.



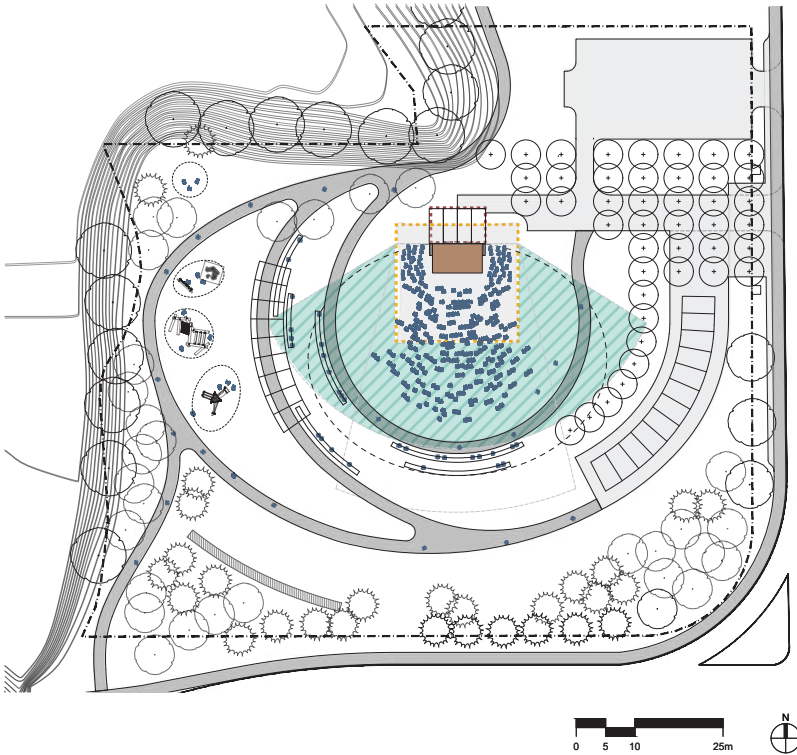
Paawidigong sign offers photo opportunities and selfies with distant views of Wabigoon River.



SEASONAL PROGRAMMING

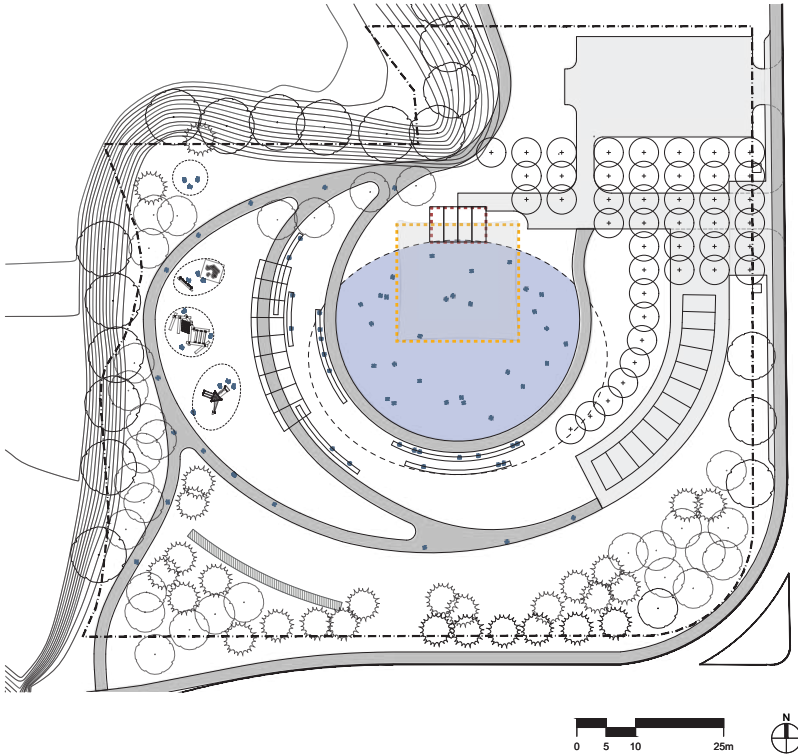
PERFORMANCE / EVENTS

-  WEATHER-PROTECTED
SMALL EVENT, APPROX. 400 PEOPLE
STANDING, 150 SITTING WITH TABLES.
-  UNCOVERED AUDIENCE
LARGE EVENT, 1000+ PEOPLE STANDING



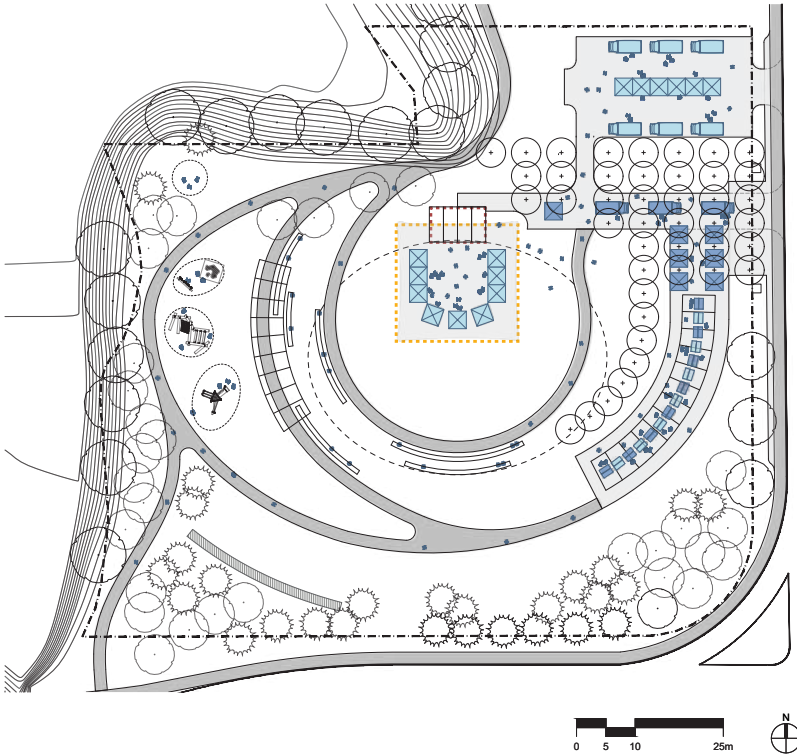
WINTER USE

-  SKATING ON ARTIFICIAL TURF



OUTDOOR MARKET; FIT-OUT

-  COVERED MARKET TABLES
(OVERFLOW)
-  MARKET TENTS
(OVERFLOW)
-  FOOD TRUCKS
(OVERFLOW)



SUMMER USE

-  LAWN GAMES + ACTIVITIES
-  ARTIFICIAL TURF

