

**Socio-economic Profile for the Geographic Area
Serviced by the
Patricia Area Community Endeavors Inc**

A Community Futures Development Corporation

**Prepared for:
FedNor/Industry Canada**



**Statistics Canada
Central Region
June 2015**



**Statistics
Canada** **Statistique
Canada**

Canada

TABLE OF CONTENTS

Introduction	4
Map	5
Geography Note and List of Census Subdivisions	6
Executive Summary	7-9

DEMOGRAPHIC PROFILE

Population Change	10
Population by Age Groups	10
Migration	11
Census Families	12
Private Households	12 -13
Census Family Status	13

ETHNOCULTURAL PROFILE

Aboriginal Identity	14
Visible Minority Groups	14
Ethnic Origin	15
Mother Tongue	16
Language Spoken Most Often at Home	17
First Official Language Spoken	17
Place of Birth	18
Generation Status	19

EDUCATION PROFILE

Highest Level of Schooling	20
Major Field of Study	21

TABLE OF CONTENTS CONT'D

LABOUR PROFILE

Labour Force Activity	22
Class of Worker	22
Labour Force Population	23
Place of Work	24
Labour Force by Industry	24
Labour Force by Occupation	25

INCOME PROFILE

Income of Individuals	26
Income of Economic Families	27
Prevalence of Low Income	28
Income of Households	29
Median Employment Income of Individuals	30
Employment Income as a Percentage of Total Income	31
Self-employment Income as a Percentage of Employment Income	32
Economic Dependency Ratio: Social Assistance	33
Economic Dependency Ratio: Employment Insurance	34

INDUSTRY PROFILE

Location Counts, Total Business Locations	35
Location Counts, Small Business Locations	35
Location Counts, Medium Business Locations	36
Location Counts, Large Business Locations	36

APPENDICES

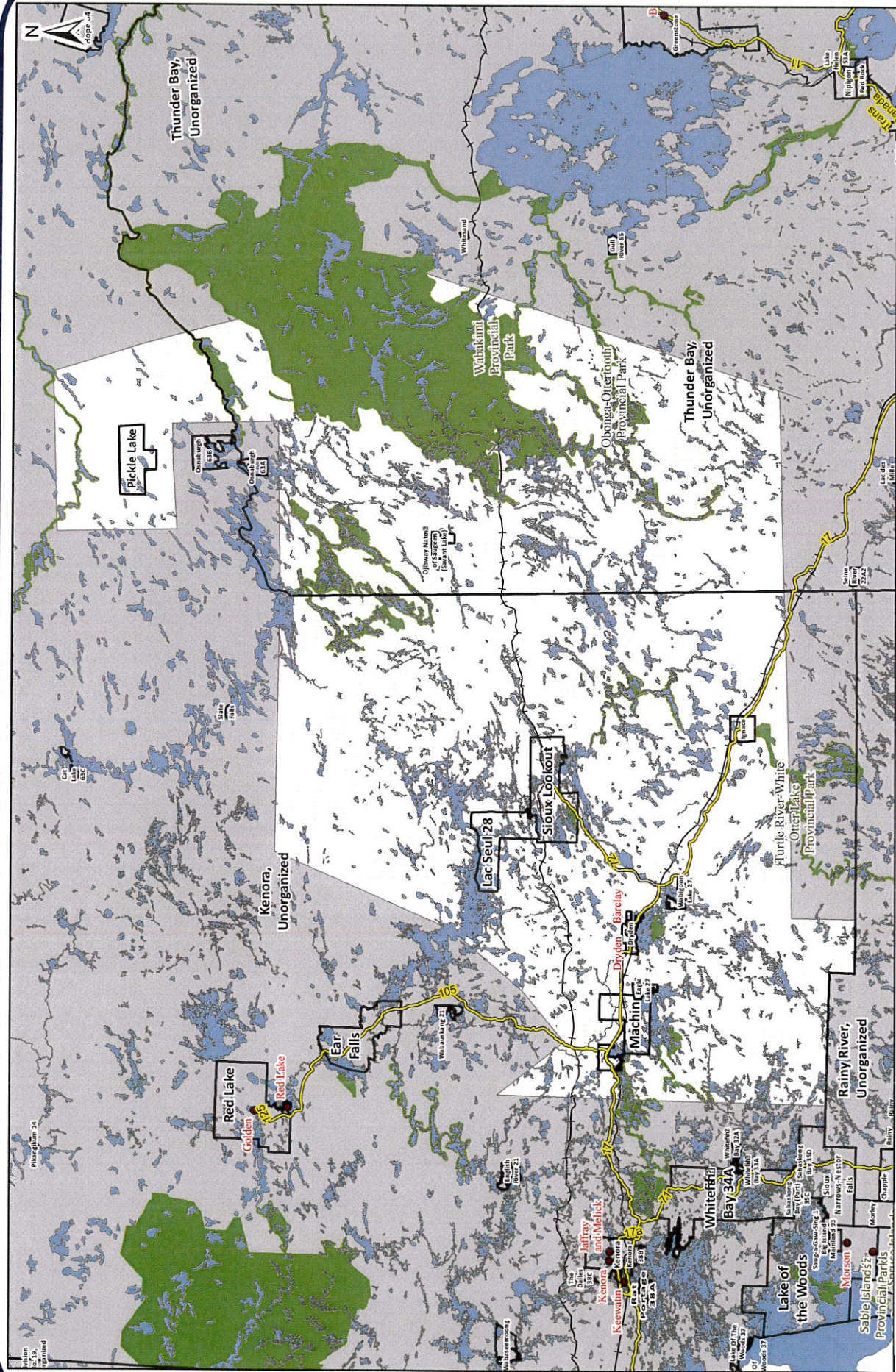
Appendix A - Census	37-38
Appendix B - National Household Survey	39-42
Appendix C - Small Business and Administrative Data (SAAD)	43
Appendix D - Canadian Business Patterns	44

INTRODUCTION

Presented within this document are statistical tables and charts on the demographics, economic activities and social characteristics of the area serviced by a Community Futures Development Corporation (CFDC) in Ontario. The data was prepared for FedNor/Industry Canada by Statistics Canada to assist CFDCs in their economic development activities.

Three sources were used to construct the Socio-economic Profile. Data from the 2011 Census of Population and 2011 National Household Survey provides information on a variety of socio-economic topics including demographics, labour, and income while data from the 2001 and 2006 Censuses of Population are included to provide historical comparisons where appropriate. Additional details are provided by the inclusion of data on migration, and income from the Small Area and Administrative Data Division. Data adapted from the Canadian Business Patterns publication provides counts of active business locations by industry and employee size range. For each data source, smaller units are combined to approximate the geographic extent serviced by the Community Futures Development Corporation (CFDC). The most recent statistics available from each source during profile construction are presented.

Appendices included at the end of the profile provide information on the concepts and variables presented in this document. For additional information, please consult the Statistics Canada website at www.statcan.gc.ca.



Produced by Statistics Canada
Central Region | March 2014
Préparé par Statistique Canada
Région du Centre | mars 2014



Community Futures Development Corporation/
Société d'aide au développement des collectivités
Census Subdivision/Subdivision de recensement

Water/Étendue d'eau
Park/Parc

Major Roads/Rues principales
Railway/Chemin de fer
Place Names/Nom de localité

Canada

Patricia Area Community Endeavors Inc

GNR = 34.7 %

The boundaries used for this project is based in part upon information supplied to Statistics Canada by FedNor in 2004 for the production of data for the 2001 Census cycle. Adjustments have been made to the boundaries to account for changes in the Statistics Canada's geographic base for the 2006 and 2011 Census years.

For 2011, Census data has been produced based upon aggregations of Statistics Canada's block-face representative points. All data is produced and provided within Statistics Canada's data quality and confidentiality standards.

Taxfiler data used in this report is based upon aggregations of postal codes falling within each geographic region. For consistency, data for current and historical years are based upon the 2011 Postal Code Conversion File containing postal codes up to June 2013.

POSTAL CODE VALIDATION DISCLAIMER:

Statistics Canada makes no representation or warranty as to, or validation of, the accuracy of any Postal Code^{OM} data submitted to Statistics Canada.

The Canadian Business Patterns data contained in this report is based upon aggregations of Census Subdivisions falling completely or partially within the CFDC area.

For more information on the geographic terms used here please see Statistics Canada Illustrated Glossary at:

<http://www.statcan.gc.ca/pub/92-195-x/92-195-x2011001-eng.htm>

List of component CSDs:

1. Ojibway Nation of Saugeen (Savant Lake)
2. Thunder Bay, Unorganized
3. Ignace
4. Machin
5. Eagle Lake 27
6. Dryden
7. Sioux Lookout
8. Pickle Lake
9. Lac Seul 28
10. Wabigoon Lake 27
11. Kenora, Unorganized

Executive Summary

Demography

The population of the area serviced by the Patricia Area Community Endeavors Inc (hereafter referred to as the Patricia Area CE) decreased by 905 people to 21,015 between 2006 and 2011. This represents an overall change of -4.1% during this time period. Children aged 0-14 decreased by 11.3% between 2006 and 2011, while the senior population aged 65 and over increased by 9.8%. The working age population (aged 25-64) comprised 55.3% of the total population in 2011.

With reference to migration, there was a net out-migration of 3,598 people from the Kenora District between 2006-2007 and 2010-2011.

The 2011 Census counted 6,195 census families in private households in the area serviced by Patricia Area CE, a decrease from 6,545 in 2006. In 2011, lone-parent families accounted for 16.5% of all census families in the Patricia Area CE area, compared to 16.7% for Ontario.

Ethno-cultural

In 2011, 88.4% of respondents reported English, 2.8% reported French and 8.8% reported a non-official language as their mother tongue among those providing a single response in the area serviced by the Patricia Area CE.

In the Patricia Area CE area, English was reported as the language spoken most often at home by 97.4% of respondents, while French was reported by 0.7% and non-official languages were reported by 2.0% of respondents.

The Aboriginal Identity population comprised 26.6% of the total population of the area serviced by the Patricia Area CE, which is higher than 2.4% reported for Ontario as a whole.

Within the Patricia Area CE area, 1.2% of the population was a member of a visible minority group in 2011.

4.3% of the population of the area serviced by the Patricia Area CE are immigrants. 0.3% of the population are recent immigrants, and the most common place of birth reported for this group was Asia.

Executive Summary Cont'd

Education

In area serviced by the Patricia Area CE, 47.1% of the population aged 15 years and over reported having a postsecondary certificate, diploma or degree. 47.5% reported having a college, CEGEP or other non-university certificate or diploma as their highest certificate, diploma or degree, while 24.6% have an apprenticeship or trade certificate or diploma and 21.6% reported having a university certificate, diploma or degree at bachelor level or above. In comparison, the proportions for Ontario were 36.2% for a college, CEGEP, or other non-university diploma or certificate, 13.5% for an apprenticeship or trades certificate or diploma and 42.8% for a university certificate, diploma or degree at bachelor level or above.

Among the population 15 years and over with post-secondary qualifications in the area serviced by the Patricia Area CE, the two most common fields of study for males were Architecture, engineering, and related technologies (1,785); and Personal, Protective and Transportation Services (640). For females, the two most common fields of study were Business, management and public administration (1,090); and Health and related fields (1,030).

Labour

According to the 2011 National Household Survey, the labour force participation rate for the population 15 years and over was 65.3% for the area serviced by the Patricia Area CE as compared to 65.5% for Ontario. The employment rate for the CFDC area was 59.4% and the unemployment rate was 9.1%, compared to the employment rate of 60.1% and unemployment rate of 8.3% for Ontario. Among the population 15 years of age and over in the labour force in the Patricia Area CE area, 7.0% were self-employed. This is lower than the proportion of 10.6% in the province of Ontario.

In 2011, "Health care and social assistance" and "Public Administration" were the most commonly reported industries by those in the labour force in the area serviced by the Patricia Area CE. In Ontario, the most commonly reported industries were "Retail Trade" and "Manufacturing".

In the area serviced by the Patricia Area CE, the most commonly reported occupational groups were "Sales and service occupations" and "Occupations in education, law and social, community and government services".

Income

According to the National Household Survey, in 2010 the median before-tax income for males in the area serviced by the Patricia Area CE was \$37,839, which was higher than the provincial median of \$36,971. Within the Patricia Area CE area, the median before-tax income for females was \$26,575 which was higher than the median income of \$25,412 for Ontario.

Executive Summary Cont'd

Income continued

The median before-tax household income for all private households in 2010 was \$61,478 for the area serviced by the Patricia Area CE compared to \$66,358 for Ontario. The median after-tax household income in the Patricia Area CE area was \$55,618 in 2010 compared to \$58,717 in Ontario.

The prevalence of low income, measured using the after-tax low income measure, among males in private households in the area serviced by the Patricia Area CE was 10.3% in 2010 which is lower than the rate of 13.2% in Ontario. The number of males in low income (985) was lower than the number of females (1,220) and represented a lower percentage of the population living in low income within the area serviced by the CFDC. In Ontario the prevalence of low income, measured using the after-tax low income measure, among females in private households was 14.5% in 2010 which is higher than the rate of 12.5% in the Patricia Area CE.

Self-employment Income as a percentage of Employment Income changed from 4.6% in 2005 to 4.0% in 2010. For Ontario, the rate went from 7.6% in 2005 to 7.0% in 2010.

In the Patricia Area CE area, the "Economic Dependency Ratio: Social Assistance" went from 1.0 in 2005 to 1.6 in 2010 while the Ontario rate went from 1.3 to 1.5. The "Economic Dependency Ratio: Employment Insurance" increased from 2.4 in 2005 to 3.3 in 2010 in the Patricia Area CE. In comparison, the Ontario rate went from 1.4 in 2005 to 2.0 in 2010.

Industry

In the area serviced by the Patricia Area CE, the most common industry to which business locations were classified in 2012 was Accommodation and Food Services, accounting for 292 of the 2,033 total locations. In Ontario it was Professional, Scientific and Technical Services.

In 2012 there were 1,998 small sized business locations in the area serviced by the Patricia Area CE. In this CFDC area, the top three industries for this category of business location were: Accommodation and Food Services (289), Construction (253), and Retail Trade (243). In comparison, the top three industries in Ontario were: Professional, Scientific and Technical Services (135,414), Real Estate and Rental and Leasing (105,577) and Construction (100,774).

There were 29 medium sized business locations in the area serviced by the Patricia Area CE in 2012. In this CFDC area, the top industries for this location category were: Public Administration (5), Other Services (5), and Health Care and Social Assistance (4). In Ontario, the top three industries were: Retail Trade (2,747), Manufacturing (2,347) and Accommodation and Food Services (2,113).

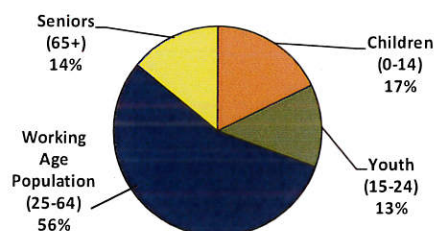
There were 6 large sized business locations in the area serviced by the Patricia Area CE in 2012. In this CFDC area, the top industries for this location category were: Health Care and Social Assistance (2), Retail Trade (2), and Manufacturing (1). In Ontario, the top three industries in this category were: Manufacturing (645), Health Care and Social Assistance (423), and Retail Trade (355).

Population by Age Group and Population Change - Patricia Area CE

	2001	2006	2011	% Change 2001-2006	% Change 2006-2011
Total	22,765	21,920	21,015	-3.7	-4.1
Children (0-14)	4,905	4,205	3,730	-14.3	-11.3
Youth (15-24)	3,080	3,030	2,685	-1.6	-11.4
Working age population (25-64)	12,360	11,970	11,615	-3.2	-3.0
Seniors (65+)	2,410	2,715	2,980	12.7	9.8

Population by Age Group, 2011

Patricia Area CE



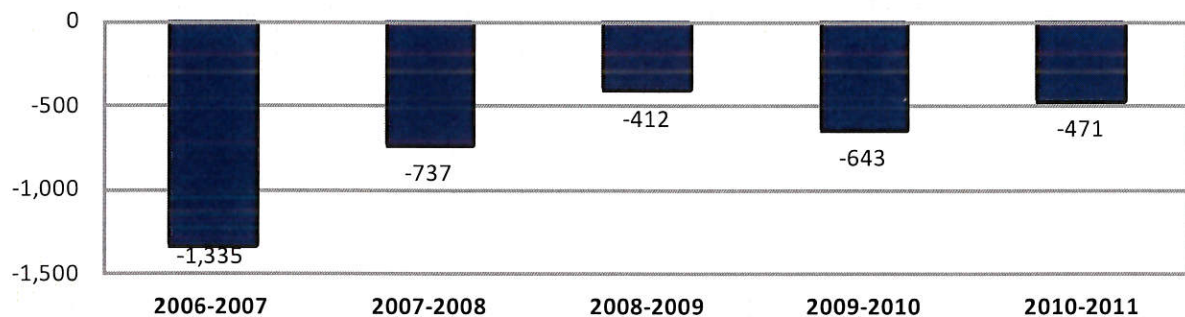
Population by Age Group, 2011 - Patricia Area CE

	Total		Male		Female	
	Number	%	Number	%	Number	%
Total - Age	21,015	100.0	10,430	100.0	10,590	100.0
0-4	1,160	5.5	565	5.4	600	5.7
5-9	1,160	5.5	600	5.8	560	5.3
10-14	1,410	6.7	705	6.8	710	6.7
15-19	1,450	6.9	730	7.0	720	6.8
20-24	1,235	5.9	635	6.1	595	5.6
25-29	1,150	5.5	570	5.5	585	5.5
30-34	1,140	5.4	540	5.2	600	5.7
35-39	1,215	5.8	565	5.4	645	6.1
40-44	1,415	6.7	690	6.6	720	6.8
45-49	1,740	8.3	830	8.0	915	8.6
50-54	1,930	9.2	995	9.5	935	8.8
55-59	1,625	7.7	860	8.2	760	7.2
60-64	1,400	6.7	720	6.9	680	6.4
65-69	930	4.4	475	4.6	455	4.3
70-74	775	3.7	385	3.7	390	3.7
75-80	570	2.7	280	2.7	295	2.8
80-84	360	1.7	170	1.6	195	1.8
85+	345	1.6	125	1.2	220	2.1
Median age	42.1	N/A	42.2	N/A	42.0	N/A

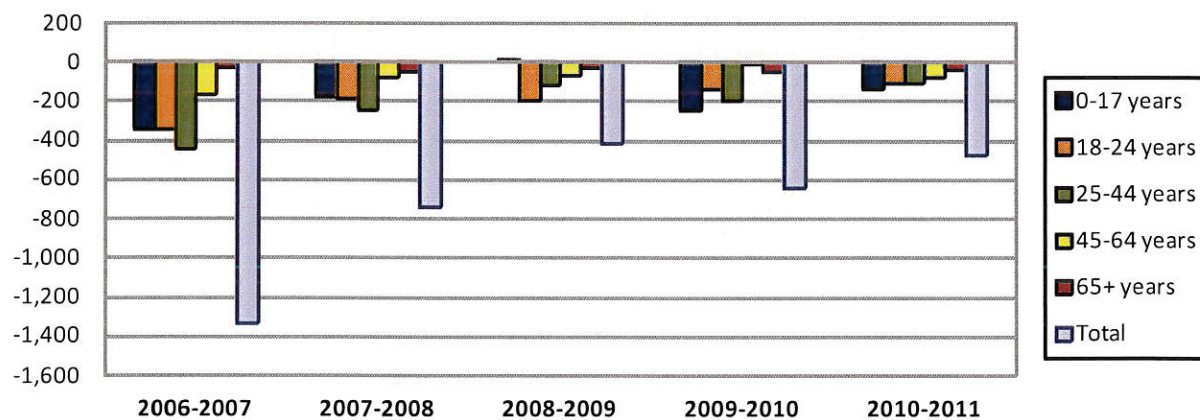
Source: Statistics Canada, special tabulations, unpublished data, 2001, 2006, and 2011 Censuses of Population

Migrants - Kenora District			
	In-Migrants	Out-Migrants	Net-Migrants
2006-2007	1,691	3,026	-1,335
2007-2008	1,920	2,657	-737
2008-2009	1,951	2,363	-412
2009-2010	1,795	2,438	-643
2010-2011	1,756	2,227	-471
2006-2011	9,113	12,711	-3,598

Net-Migrants
Kenora District



Net-Migrants by Age Group
Kenora District

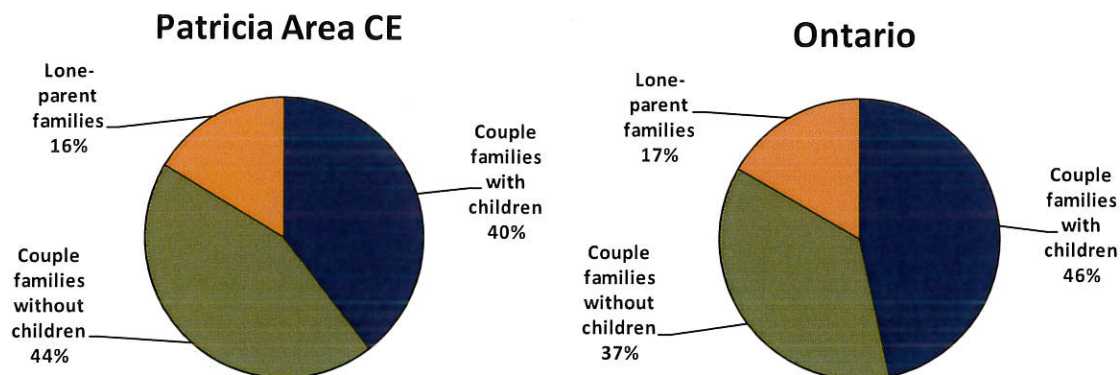


Source: Statistics Canada, Income Statistics Division, Migration Estimates by Census Division, 91C0025

Census Family by Family Structure - Patricia Area CE

	2001		2006		2011	
	Number	%	Number	%	Number	%
Total number of census families	6,640	100.0	6,545	100.0	6,195	100.0
Couple families with children	3,165	47.7	2,830	43.2	2,450	39.5
Couple families without children	2,480	37.3	2,670	40.8	2,735	44.1
Lone-parent families	995	15.0	1,040	15.9	1,020	16.5

Census Families by Family Structure, 2011



Private Households by Household Size, 2011 - Patricia Area CE

	Number	%
Total	8,460	100.0
1 person	2,160	25.5
2 persons	3,170	37.5
3 persons	1,345	15.9
4 persons	1,135	13.4
5 persons	415	4.9
6 or more persons	235	2.8
Average number of persons in private households	2.4	N/A

Source: Statistics Canada, special tabulations, unpublished data, 2001, 2006, and 2011 Censuses of Population

Private Households by Household Type, 2011 - Patricia Area CE

	Number	%
Total	8,455	100.0
One-family households	5,540	65.5
Other family households	515	6.1
Non-family households	2,410	28.5

Total Children in Census Families in Private Households, 2011

	Patricia Area CE	Ontario
Total	6,100	4,083,925
Under 6 years	1,300	839,960
6 to 14 years	2,280	1,323,745
15 to 17 years	795	496,005
18 to 24 years	1,150	888,980
25 years and over	565	535,225
Average number of children at home per census family	1.0	1.1
Average number of persons per census family	2.8	3.0

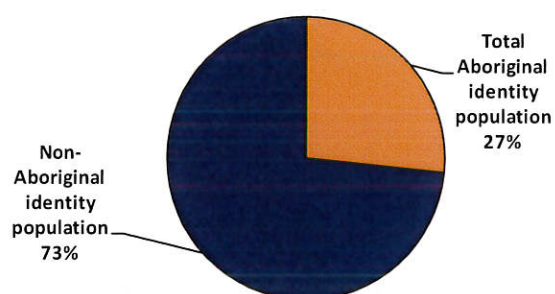
Source: Statistics Canada, special tabulation, unpublished data, 2011 Census of Population

Total Population by Aboriginal Identity, 2011

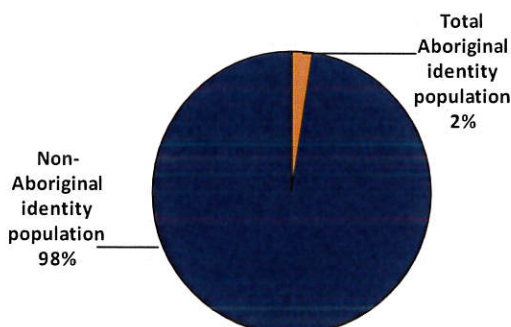
	Patricia Area CE		Ontario	
	Number	%	Number	%
Total population	20,725	100.0	12,651,790	100.0
Total Aboriginal identity population	5,510	26.6	301,430	2.4
Non-Aboriginal identity population	15,215	73.4	12,350,360	97.6

Aboriginal Identity, 2011

Patricia Area CE



Ontario



Total Population by Visible Minority Group, 2011

	Patricia Area CE		Ontario	
	Number	%	Number	%
Total population by visible minority groups	20,725	100.0	12,651,795	100.0
Total visible minority population	240	1.2	3,279,565	25.9
Not a visible minority	20,485	98.8	9,372,225	74.1

Source: Statistics Canada, special tabulations, unpublished data, 2011 National Household Survey

Top 10 Ethnic Origins, Total Responses, 2011

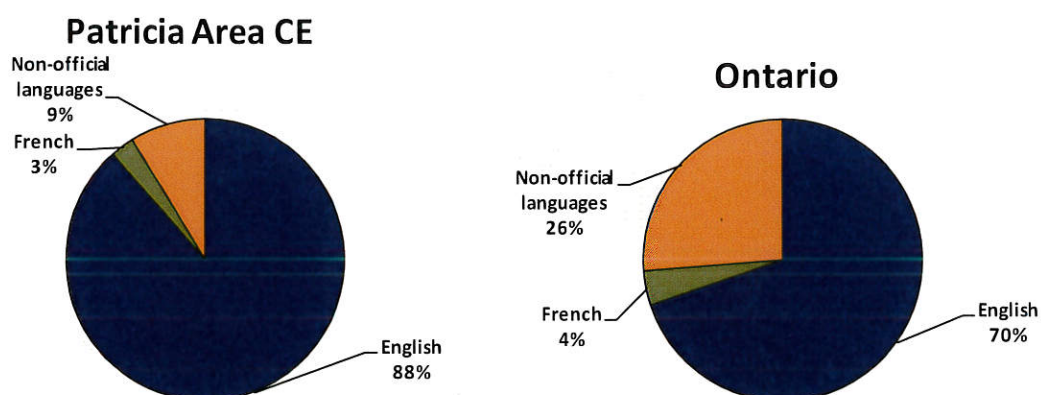
	Patricia Area CE	Ontario
Total population	20,725	12,651,790
English	6,525	2,925,660
Canadian	4,960	2,946,095
First Nations (North American Indian)	4,495	345,875
Scottish	4,385	2,080,545
German	3,675	1,154,550
Irish	3,615	2,069,110
French	3,425	1,362,320
Ukrainian	2,005	342,005
Métis	1,325	97,040
Swedish	860	67,795

Source: Statistics Canada, special tabulations, unpublished data, 2011 National Household Survey

Mother Tongue, Single Response

2001				
	Patricia Area CE		Ontario	
	Number	%	Number	%
Total	22,465	100.0	11,122,935	100.0
English	19,520	86.9	7,965,225	71.6
French	775	3.4	485,630	4.4
Non-official languages	2,170	9.7	2,672,085	24.0
2006				
	Patricia Area CE		Ontario	
	Number	%	Number	%
Total	21,755	100.0	11,853,565	100.0
English	18,655	85.8	8,230,705	69.4
French	705	3.2	488,815	4.1
Non-official languages	2,400	11.0	3,134,045	26.4
2011				
	Patricia Area CE		Ontario	
	Number	%	Number	%
Total	20,665	100.0	12,434,775	100.0
English	18,265	88.4	8,677,040	69.8
French	570	2.8	493,295	4.0
Non-official languages	1,825	8.8	3,264,440	26.3

Mother Tongue - Single Response, 2011

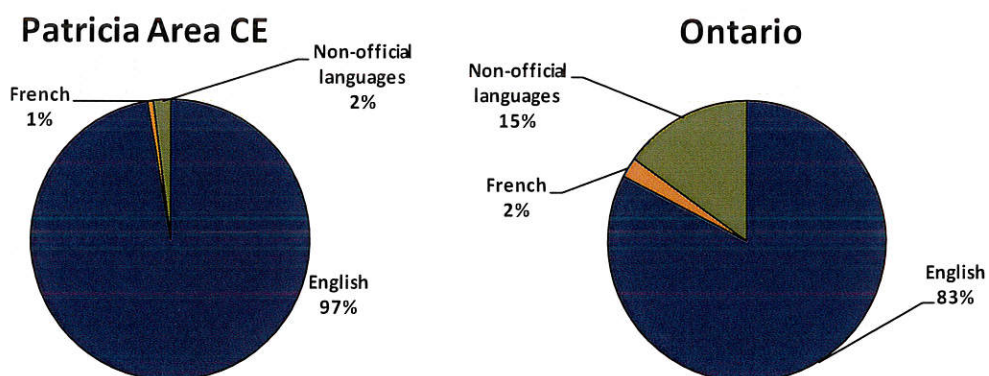


Source: Statistics Canada, special tabulations, unpublished data, 2001, 2006, and 2011 Censuses of Population

Languages Spoken Most Often at Home, Single Response, 2011

	Patricia Area CE	Ontario
Total	20,675	12,156,790
English	20,130	10,044,810
French	135	284,115
Non-official languages	415	1,827,870

Languages Spoken Most Often at Home – Single Response, 2011



First Official Language Spoken, 2011

	Patricia Area CE		Ontario	
	Number	%	Number	%
Total population	20,845	100.0	12,722,065	100.0
English	20,300	97.4	11,844,580	93.1
French	480	2.3	500,270	3.9
English and French	15	0.1	84,230	0.7
Neither English nor French	45	0.2	292,980	2.3

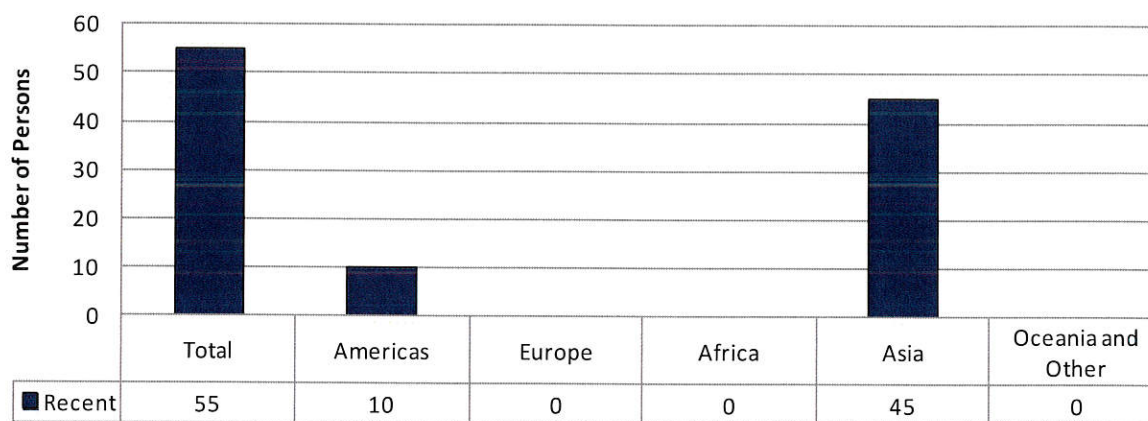
Source: Statistics Canada, special tabulations, unpublished data, 2011 Census of Population

Places of Birth of Total and Recent Immigrants in Private Households, 2011

		Patricia Area CE		Ontario	
		Number	%	Number	%
Total	Total	905	100.0	3,611,365	100.0
	Recent	55	100.0	501,060	100.0
Americas	Total	240	26.5	580,045	16.1
	Recent	10	18.2	82,225	16.4
United States	Total	230	95.8	115,045	19.8
	Recent	10	100.0	20,675	25.1
Europe	Total	530	58.6	1,206,005	33.4
	Recent	0	0.0	59,945	12.0
Africa	Total	0	0.0	195,900	5.4
	Recent	0	0.0	40,950	8.2
Asia	Total	125	13.8	1,617,325	44.8
	Recent	45	81.8	316,080	63.1
Philippines	Total	115	92.0	204,035	12.6
	Recent	40	88.9	53,235	16.8
Oceania and Other	Total	0	0.0	12,085	0.3
	Recent	0	0.0	1,860	0.4

Place of Birth of Recent Immigrants in Private Households, 2011

Patricia Area CE



Source: Statistics Canada, special tabulations, unpublished data, 2011 National Household Survey

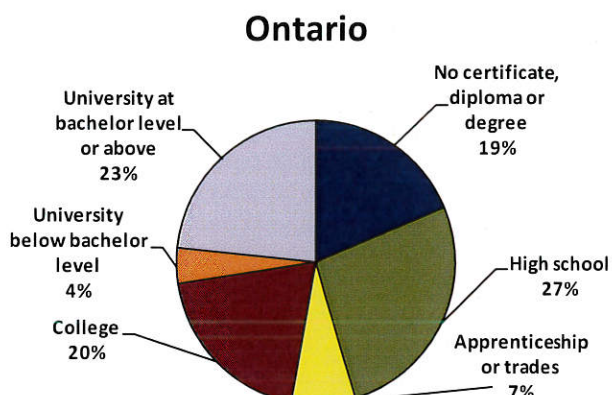
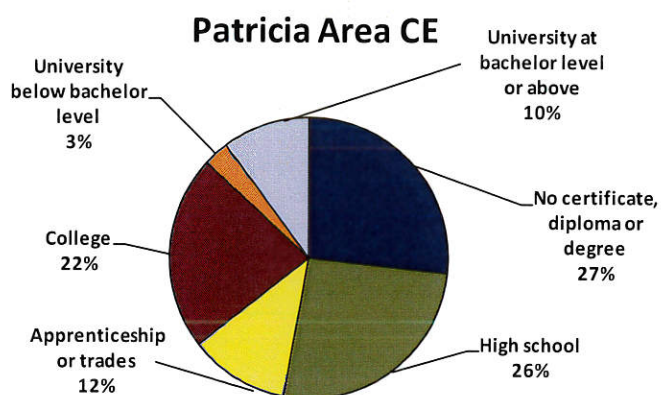
Generation Status				
2001 Census				
	Patricia Area CE		Ontario	
	Number	%	Number	%
Total population 15 years and over	17,855	100.0	9,048,035	100.0
1st generation	1,655	9.3	2,951,230	32.6
2nd generation	3,405	19.1	1,808,580	20.0
3rd generation and over	12,795	71.7	4,288,230	47.4
2006 Census				
	Patricia Area CE		Ontario	
	Number	%	Number	%
Total population 15 years and over	17,720	100.0	9,819,420	100.0
1st generation	1,460	8.2	3,340,210	34.0
2nd generation	2,810	15.9	1,912,460	19.5
3rd generation and over	13,450	75.9	4,566,750	46.5
2011 National Household Survey				
	Patricia Area CE		Ontario	
	Number	%	Number	%
Total population	20,725	100.0	12,651,795	100.0
1st generation	1,075	5.2	3,779,630	29.9
2nd generation	2,695	13.0	2,849,290	22.5
3rd generation and over	16,955	81.8	6,022,870	47.6

Source: Statistics Canada, special tabulations, unpublished data, 2001 and 2006 Censuses of Population, 2011 National Household Survey

Total Population 15 Years and Over By Highest Certificate, Diploma, or Degree, 2011

	Patricia Area CE		Ontario	
	Number	%	Number	%
Total population	17,040	100.0	10,473,665	100.0
No certificate, diploma or degree	4,555	26.7	1,954,520	18.7
High school diploma or equivalent	4,450	26.1	2,801,805	26.8
Postsecondary certificate, diploma or degree	8,030	47.1	5,717,340	54.6
Apprenticeship or trades certificate or diploma	1,975	24.6	771,140	13.5
College, CEGEP or other non-university certificate or diploma	3,815	47.5	2,070,875	36.2
University certificate or diploma below bachelor level	505	6.3	427,145	7.5
University certificate, diploma or degree at bachelor level or above	1,735	21.6	2,448,175	42.8
Bachelor's degree	1,060	61.1	1,515,075	61.9
University certificate, diploma or degree above bachelor level	675	38.9	933,100	38.1

Population 15 Years and Over by Highest Certificate, Diploma or Degree, 2011



Source: Statistics Canada, special tabulations, unpublished data, 2011 National Household Survey

**Major Field of Study for Population 15 Years and Over with
Post Secondary Qualifications, 2011**

		Patricia Area CE		Ontario	
		Number	%	Number	%
Total population with post secondary qualifications CIP 2011	Male	3,940	100.0	2,770,625	100.0
	Female	4,085	100.0	2,946,715	100.0
Education	Male	210	5.3	93,405	3.4
	Female	595	14.6	294,210	10.0
Visual and performing arts, and communications technologies	Male	75	1.9	104,405	3.8
	Female	85	2.1	117,740	4.0
Humanities	Male	105	2.7	133,215	4.8
	Female	170	4.2	214,975	7.3
Social and behavioural sciences and law	Male	175	4.4	233,645	8.4
	Female	460	11.3	448,690	15.2
Business, management and public administration	Male	260	6.6	494,395	17.8
	Female	1,090	26.7	728,010	24.7
Physical and life sciences and technologies	Male	65	1.6	116,050	4.2
	Female	105	2.6	113,225	3.8
Mathematics, computer and information sciences	Male	50	1.3	167,780	6.1
	Female	135	3.3	99,845	3.4
Architecture, engineering, and related technologies	Male	1,785	45.3	1,046,005	37.8
	Female	120	2.9	105,365	3.6
Agriculture, natural resources and conservation	Male	355	9.0	68,510	2.5
	Female	65	1.6	35,305	1.2
Health and related fields	Male	230	5.8	151,235	5.5
	Female	1,030	25.2	640,390	21.7
Personal, protective and transportation services	Male	640	16.2	161,745	5.8
	Female	245	6.0	147,970	5.0
Other fields of study	Male	0	0.0	230	0.0
	Female	0	0.0	980	0.0

Source: Statistics Canada, special tabulations, unpublished data, 2011 National Household Survey

Labour Force Activity for the Population 15 Years and Over

2006 Census						
	Patricia Area CE			Ontario		
	Total	Male	Female	Total	Male	Female
Total population 15 years and over	17,715	8,870	8,845	9,819,420	4,744,710	5,074,710
In the labour force	12,130	6,345	5,785	6,587,575	3,437,670	3,149,905
Employed	11,325	5,900	5,425	6,164,245	3,230,050	2,934,195
Unemployed	805	445	360	423,335	207,620	215,710
Not in the labour force	5,590	2,525	3,060	3,231,840	1,307,035	1,924,805
Participation rate (%)	68.5	71.5	65.4	67.1	72.5	62.1
Employment rate (%)	63.9	66.5	61.3	62.8	68.1	57.8
Unemployment rate (%)	6.6	7.0	6.2	6.4	6.0	6.8

2011 National Household Survey						
	Patricia Area CE			Ontario		
	Total	Male	Female	Total	Male	Female
Total population 15 years and over	17,040	8,490	8,550	10,473,665	5,064,720	5,408,950
In the labour force	11,135	5,560	5,570	6,864,985	3,542,030	3,322,960
Employed	10,120	4,950	5,175	6,297,000	3,249,165	3,047,835
Unemployed	1,010	610	400	567,985	292,860	275,120
Not in the labour force	5,910	2,935	2,975	3,608,685	1,522,690	2,085,990
Participation rate (%)	65.3	65.5	65.1	65.5	69.9	61.4
Employment rate (%)	59.4	58.3	60.5	60.1	64.2	56.3
Unemployment rate (%)	9.1	11.0	7.2	8.3	8.3	8.3

Note: Refer to Appendix A and B for information about Census and NHS

Class of Worker for the Population 15 Years and Over, 2011

	Patricia Area CE		Ontario	
	Number	%	Number	%
All classes of worker	10,955	100.0	6,680,245	100.0
Employees	10,185	93.0	5,973,825	89.4
Self-employed	770	7.0	706,425	10.6

Source: Statistics Canada, special tabulations, unpublished data, 2006 Census of Population, 2011 National Household Survey

**Total Labour Force Population Aged 15 Years and Over by
Full-time or Part-time Weeks Worked, 2010 - Patricia Area CE**

Total		
	Number	%
Total	11,130	100.0
Did not work	515	4.6
Worked	10,615	95.4
Worked full-time	8,605	81.1
Worked part-time	2,010	18.9
Males		
	Number	%
Total	5,555	100.0
Did not work	245	4.4
Worked	5,310	95.6
Worked full-time	4,635	87.3
Worked part-time	675	12.7
Females		
	Number	%
Total	5,570	100.0
Did not work	270	4.8
Worked	5,300	95.2
Worked full-time	3,970	74.9
Worked part-time	1,330	25.1

Source: Statistics Canada, special tabulations, unpublished data, 2011 National Household Survey

Place of Work Status for the Employed Labour Force 15 Years and Over, 2011

	Patricia Area CE		Ontario	
	Number	%	Number	%
Males	4,945	100.0	3,249,165	100.0
Worked at usual place	3,695	74.7	2,524,555	77.7
Worked at home	165	3.3	216,905	6.7
Worked outside Canada	0	0.0	21,150	0.7
No fixed workplace address	1,075	21.7	486,560	15.0
Females	5,170	100.0	3,047,835	100.0
Worked at usual place	4,640	89.7	2,646,420	86.8
Worked at home	220	4.3	206,895	6.8
Worked outside Canada	0	0.0	10,240	0.3
No fixed workplace address	310	6.0	184,280	6.0

Top 10 Industries for the Labour Force 15 Years and Over, 2011

	Patricia Area CE		Ontario	
	Number	%	Number	%
All industries - NAICS 2007	10,955	100.0	6,680,245	100.0
62 Health care and social assistance	1,935	17.7	692,130	10.4
91 Public administration	1,420	13.0	458,665	6.9
44-45 Retail trade	1,265	11.5	751,205	11.2
61 Educational services	990	9.0	499,690	7.5
72 Accommodation and food services	960	8.8	417,670	6.3
48-49 Transportation and warehousing	775	7.1	307,405	4.6
23 Construction	665	6.1	417,895	6.3
31-33 Manufacturing	615	5.6	697,565	10.4
81 Other services (except public administration)	530	4.8	296,345	4.4
11 Agriculture, forestry, fishing and hunting	340	3.1	101,280	1.5
All other industries	1,460	13.3	2,040,395	30.5

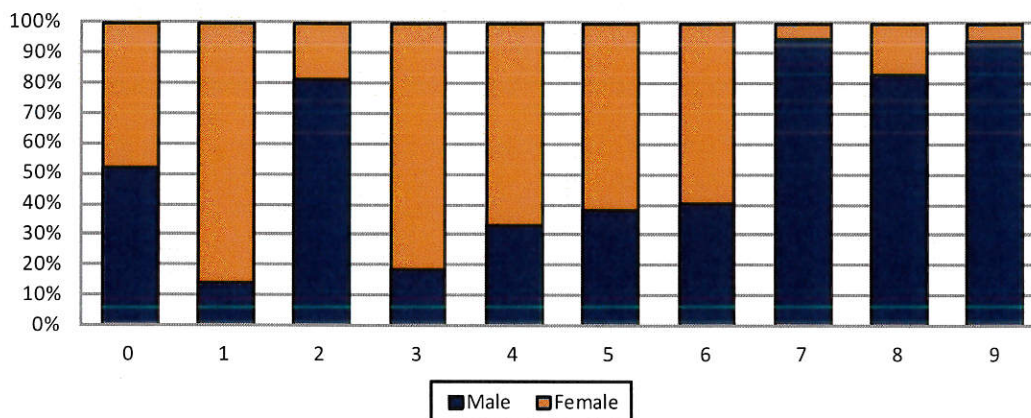
Source: Statistics Canada, special tabulations, unpublished data, 2011 National Household Survey

Occupation for the Labour Force 15 Years and Over, 2011

	Patricia Area CE		Ontario	
	Number	%	Number	%
All occupations - NOC 2011	10,950	100.0	6,680,245	100.0
6 Sales and service occupations	2,600	23.7	1,550,260	23.2
4 Occupations in education, law and social, community and government services	2,005	18.3	801,465	12.0
7 Trades, transport and equipment operators and related occupations	1,985	18.1	868,515	13.0
1 Business, finance and administration occupations	1,415	12.9	1,138,325	17.0
0 Management occupations	930	8.5	770,575	11.5
3 Health occupations	610	5.6	392,695	5.9
2 Natural and applied sciences and related occupations	525	4.8	494,500	7.4
8 Natural resources, agriculture and related production occupations	395	3.6	106,810	1.6
9 Occupations in manufacturing and utilities	370	3.4	350,680	5.2
5 Occupations in art, culture, recreation and sport	120	1.1	206,420	3.1

Occupation by Sex, 2011

Patricia Area CE



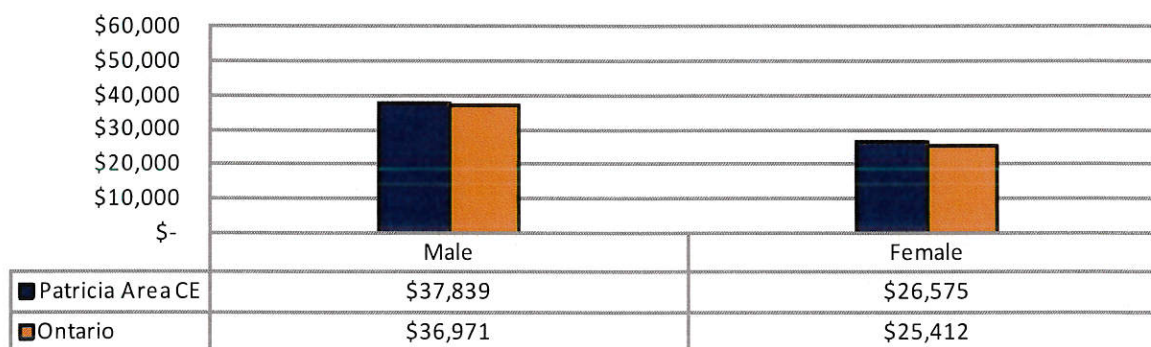
Please see table above for the corresponding occupational group names

Source: Statistics Canada, special tabulations, unpublished data, 2011 National Household Survey

**Income Distribution (Before-Tax Total Income) for
Individuals 15 Years and Over, 2010 - Patricia Area CE**

	Male		Female	
	Number	%	Number	%
Population 15 years and over	8,490	100.0	8,550	100.0
Without income	305	3.6	425	5.0
With income	8,180	96.3	8,130	95.1
Under \$5,000	735	9.0	530	6.5
\$5,000 to \$9,999	435	5.3	725	8.9
\$10,000 to \$14,999	435	5.3	940	11.6
\$15,000 to \$19,999	515	6.3	965	11.9
\$20,000 to \$29,999	1,185	14.5	1,325	16.3
\$30,000 to \$39,999	955	11.7	1,145	14.1
\$40,000 to \$49,999	865	10.6	910	11.2
\$50,000 to \$59,999	760	9.3	520	6.4
\$60,000 to \$79,999	1,090	13.3	560	6.9
\$80,000 to \$99,999	720	8.8	320	3.9
\$100,000 and over	490	6.0	185	2.3
\$100,000 to \$124,999	325	4.0	130	1.6
\$125,000 and over	165	2.0	55	0.7
Median income \$	37,839	N/A	26,575	N/A
Average income \$	45,219	N/A	33,076	N/A
Median after-tax income \$	34,728	N/A	24,592	N/A
Average after-tax income \$	38,374	N/A	29,060	N/A

**Median Income Distribution (Before-tax Total) for
Males and Females 15 Years and Over (\$), 2010**

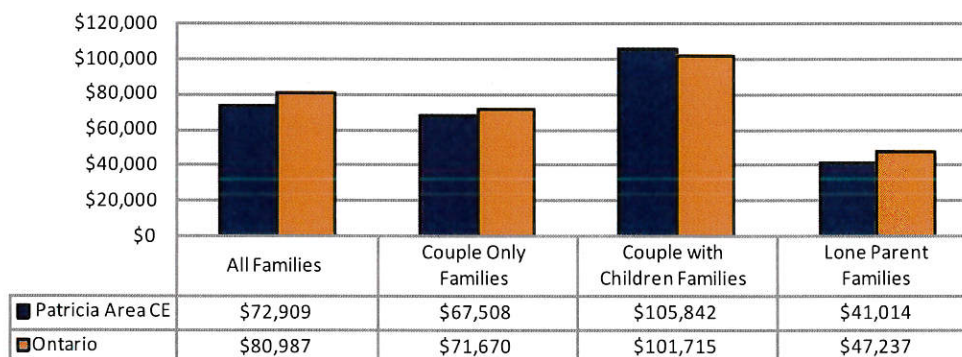


Source: Statistics Canada, special tabulations, unpublished data, 2011 National Household Survey

Economic Family Income Distribution, 2010

All Families		
	Patricia Area CE	Ontario
Total economic families	6,220	3,528,375
Median family income \$	72,909	80,987
Average family income \$	87,271	100,152
Median after-tax family income \$	65,397	71,128
Average after-tax family income \$	75,061	83,322
Couple Only Families		
	Patricia Area CE	Ontario
Total economic families	2,670	1,197,250
Median family income \$	67,508	71,670
Average family income \$	79,643	89,678
Median after-tax family income \$	60,635	63,402
Average after-tax family income \$	68,161	74,551
Couple with Children Families		
	Patricia Area CE	Ontario
Total economic families	2,425	1,689,180
Median family income \$	105,842	101,715
Average family income \$	112,525	121,285
Median after-tax family income \$	90,071	87,820
Average after-tax family income \$	95,968	99,843
Lone Parent Families		
	Patricia Area CE	Ontario
Total economic families	910	520,715
Median family income \$	41,014	47,237
Average family income \$	44,277	58,622
Median after-tax family income \$	39,104	44,398
Average after-tax family income \$	40,903	51,624

Median Income Distribution (Before-tax) by Economic Family Type (\$), 2010



Source: Statistics Canada, special tabulations, unpublished data, 2011 National Household Survey

Prevalence of Low Income, 2010 - Patricia Area CE

Population in private households for income status

	Male		Female	
	Number	%	Number	%
Total	9,555	100.0	9,760	100.0
Less than 18 years	2,005	21.0	2,045	21.0
Less than 6 years	505	25.2	590	28.9
18 to 64 years	6,185	64.7	6,295	64.5
65 years and over	1,365	14.3	1,415	14.5

In low income in 2010 based on after-tax low-income measure (LIM-AT)

	Male		Female	
	Number	%	Number	%
Total	985	100.0	1,220	100.0
Less than 18 years	315	32.0	350	28.7
Less than 6 years	60	19.0	120	34.3
18 to 64 years	605	61.4	725	59.4
65 years and over	60	6.1	150	12.3

Prevalence of low income in 2010 based on after-tax low income measure %

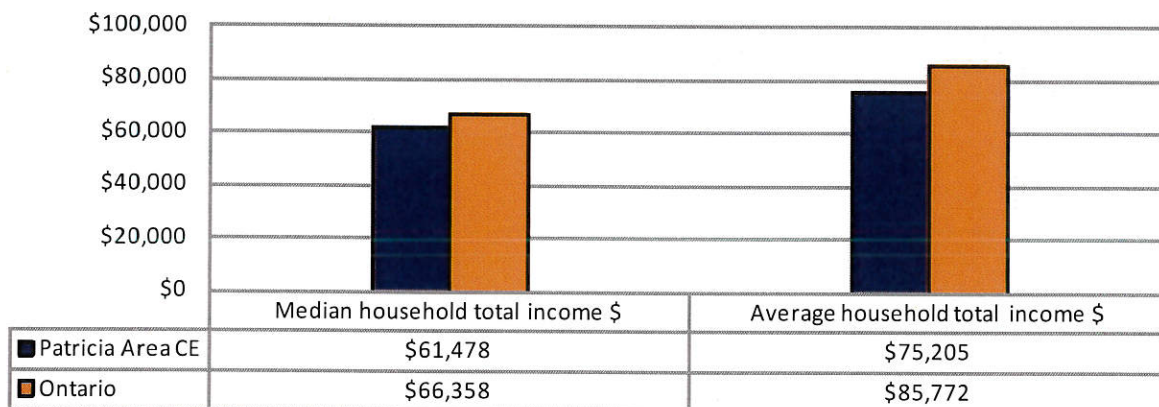
	Male		Female	
	Number	%	Number	%
Total		10.3		12.5
Less than 18 years		16.0		17.1
Less than 6 years		11.8		20.2
18 to 64 years		9.8		11.5
65 years and over		4.4		10.6

Source: Statistics Canada, special tabulations, unpublished data, 2011 National Household Survey.

**Household Income Distribution (Before-tax Total Income)
for All Private Households, 2010**

	Patricia Area CE		Ontario	
	Number	%	Number	%
Total number of households	8,495	100.0	4,886,655	100.0
Under \$5,000	180	2.1	123,780	2.5
\$5,000 to \$9,999	145	1.7	78,000	1.6
\$10,000 to \$14,999	260	3.1	143,390	2.9
\$15,000 to \$19,999	405	4.8	211,140	4.3
\$20,000 to \$29,999	790	9.3	405,725	8.3
\$30,000 to \$39,999	645	7.6	425,410	8.7
\$40,000 to \$49,999	955	11.2	425,720	8.7
\$50,000 to \$59,999	785	9.2	398,700	8.2
\$60,000 to \$79,999	1,230	14.5	680,850	13.9
\$80,000 to \$99,999	845	9.9	552,660	11.3
\$100,000 to \$124,999	810	9.5	497,970	10.2
\$125,000 to \$149,999	705	8.3	331,460	6.8
\$150,000 and over	740	8.7	611,840	12.5
Median household total income \$	61,478	N/A	66,358	N/A
Average household total income \$	75,205	N/A	85,772	N/A
Median after-tax household income \$	55,618	N/A	58,717	N/A
Average after-tax household income \$	64,768	N/A	71,523	N/A

**Household Income Distribution (Before-tax)
for All Private Households (\$), 2010**



Source: Statistics Canada, special tabulations, unpublished data, 2011 National Household Survey.

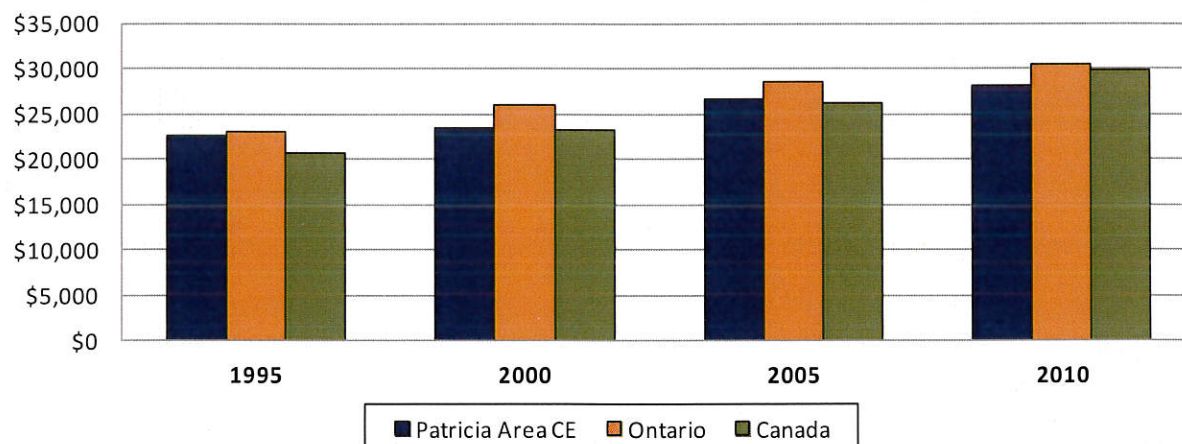
Median Employment Income for Individuals (\$)

	1995	2000	2005	2010
Patricia Area CE	22,600	23,500	26,600	28,030
Ontario	23,000	26,000	28,600	30,390
Canada	20,600	23,200	26,300	29,730

Median Employment Income for Individuals, Index (1995=100)

	1995	2000	2005	2010
Patricia Area CE	100.0	104.0	117.7	124.0
Ontario	100.0	113.0	124.3	132.1
Canada	100.0	112.6	127.7	144.3

Median Employment Income for Individuals



Source: Statistics Canada, Income Statistics Division, Labour Profiles, 71C0018

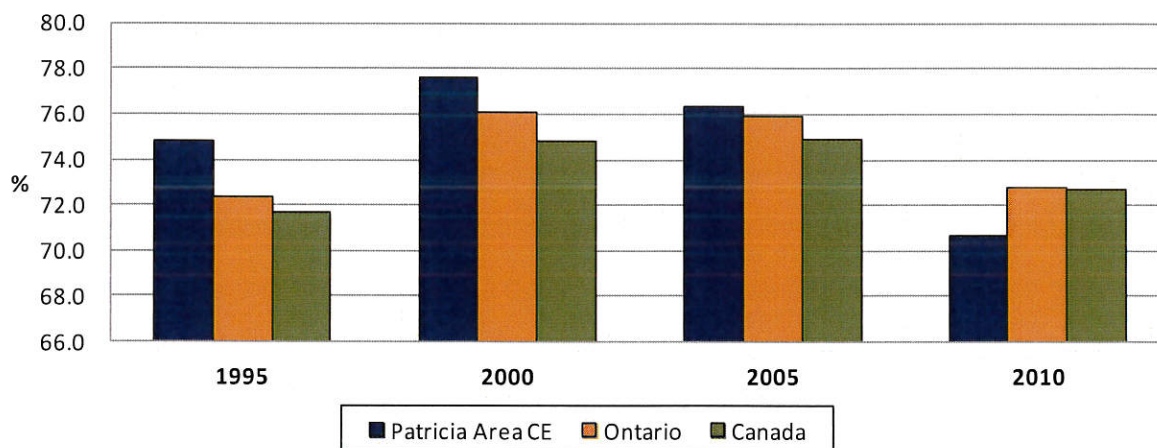
Employment Income as a Percentage of Total Income (%)

	1995	2000	2005	2010
Patricia Area CE	74.8	77.6	76.3	70.7
Ontario	72.3	76.1	75.9	72.8
Canada	71.7	74.8	74.9	72.7

Employment Income as a Percentage of Total Income, Index (1995=100)

	1995	2000	2005	2010
Patricia Area CE	100.0	103.7	102.0	94.5
Ontario	100.0	105.2	105.0	100.7
Canada	100.0	104.3	104.4	101.4

Employment Income as a Percentage of Total Income



Source: Statistics Canada, Income Statistics Division, Labour Profiles, 71C0018

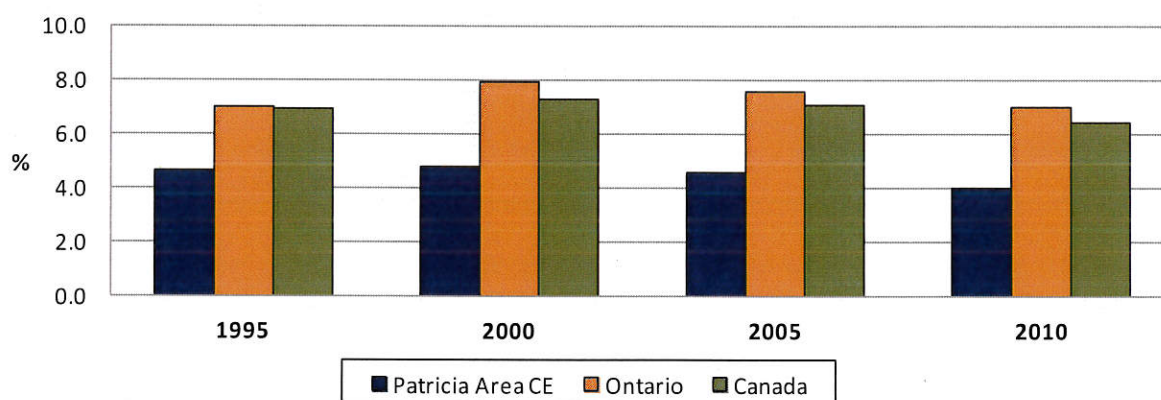
Self Employment Income as a Percentage of Employment Income (%)

	1995	2000	2005	2010
Patricia Area CE	4.6	4.8	4.6	4.0
Ontario	7.0	7.9	7.6	7.0
Canada	6.9	7.3	7.1	6.4

Self Employment Income as a Percentage of Employment Income, Index (1995=100)

	1995	2000	2005	2010
Patricia Area CE	100.0	104.1	98.4	85.9
Ontario	100.0	113.4	108.6	100.4
Canada	100.0	105.3	101.6	92.1

**Self Employment Income as a Percentage of
Employment Income**



Source: Statistics Canada, Income Statistics Division, Labour Profiles, 71C0018

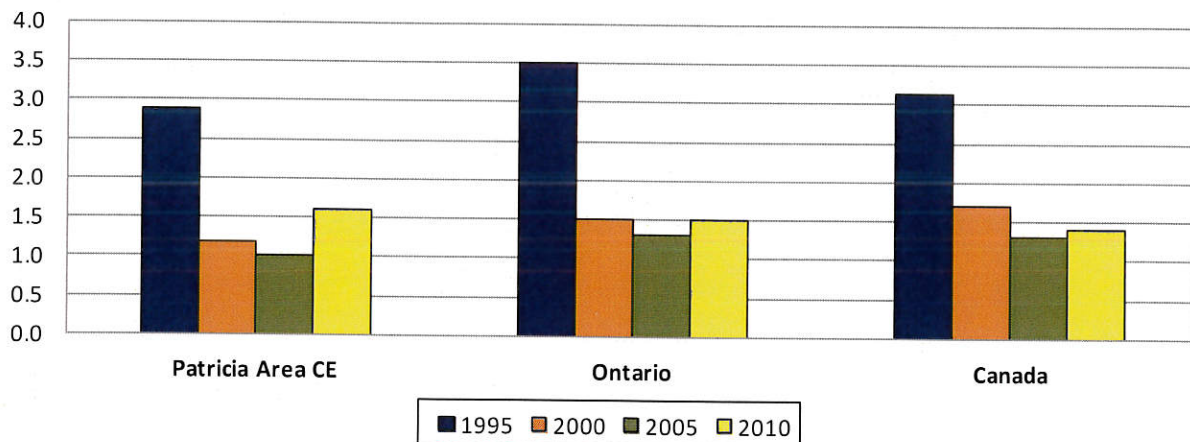
Number and Economic Dependency Ratio: Social Assistance

	Patricia Area CE		Ontario		Canada	
	Number	EDR	Number	EDR	Number	EDR
1995	1,620	2.9	752,460	3.5	1,961,310	3.1
2000	960	1.2	512,270	1.5	1,532,450	1.7
2005	880	1.0	495,640	1.3	1,356,750	1.3
2010	1170	1.6	606,390	1.5	1,508,550	1.4

Economic Dependency Ratio: Social Assistance, Index (1995=100)

	1995	2000	2005	2010
Patricia Area CE	100.0	41.0	34.7	55.6
Ontario	100.0	44.1	35.8	43.0
Canada	100.0	53.4	40.6	44.7

Economic Dependency Ratio: Social Assistance



The *Economic Dependency Ratio: Social Assistance* is the amount of social assistance dollars received as benefits in a given area per \$100 of employment income for the same area.

Source: Statistics Canada, Income Statistics Division, Economic Dependency Profiles, 13C0017

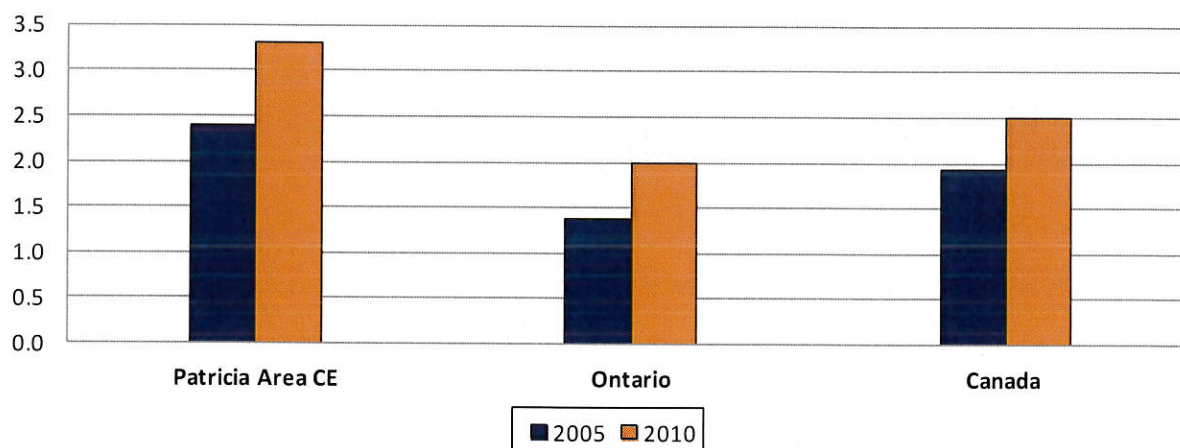
Number and Economic Dependency Ratio: Employment Insurance

	2005		2010	
	Number	EDR	Number	EDR
Patricia Area CE	1,970	2.4	2,190	3.3
Ontario	678,240	1.4	898,600	2.0
Canada	2,296,870	1.9	2,800,000	2.5

Economic Dependency Ratio: Employment Insurance, Index (2005=100)

	2005	2010
Patricia Area CE	100.0	137.5
Ontario	100.0	144.9
Canada	100.0	129.5

Economic Dependency Ratio: Employment Insurance



The *Economic Dependency Ratio: Employment Insurance* is the amount of employment insurance dollars received as benefits in a given area per \$100 of employment income for the same area.

Source: Statistics Canada, Income Statistics Division, Economic Dependency Profiles, 13C0017

Location Counts for Total Business Locations, December 2012 - Top 10 Industries

Industries - NAICS 2012	Patricia Area CE		Ontario	
	Number	%	Number	%
Total	2,033	100.0	910,821	100.0
72 - Accommodation and food services	292	14.4	35,882	3.9
23 - Construction	253	12.4	101,804	11.2
44-45 - Retail trade	249	12.2	82,631	9.1
81 - Other services (except public administration)	180	8.9	68,758	7.5
11 - Agriculture, forestry, fishing and hunting	165	8.1	37,800	4.2
53 - Real estate and rental and leasing	154	7.6	105,961	11.6
48-49 - Transportation and warehousing	147	7.2	48,443	5.3
62 - Health care and social assistance	122	6.0	50,298	5.5
54 - Professional, scientific and technical services	93	4.6	136,505	15.0
52 - Finance and insurance	83	4.1	55,262	6.1
All other industries	295	14.5	187,477	20.6

Location Counts for Small Business Locations, December 2012 - Top 10 Industries

Industries - NAICS 2012	Patricia Area CE		Ontario	
	Number	%	Number	%
Total	1,998	100.0	890,507	100.0
72 - Accommodation and food services	289	14.5	33,645	3.8
23 - Construction	253	12.7	100,774	11.3
44-45 - Retail trade	243	12.2	79,529	8.9
81 - Other services (except public administration)	175	8.8	68,214	7.7
11 - Agriculture, forestry, fishing and hunting	164	8.2	37,560	4.2
53 - Real estate and rental and leasing	154	7.7	105,577	11.9
48-49 - Transportation and warehousing	143	7.2	47,611	5.3
62 - Health care and social assistance	116	5.8	48,494	5.4
54 - Professional, scientific and technical services	93	4.7	135,414	15.2
52 - Finance and insurance	82	4.1	54,471	6.1
All other industries	286	14.3	179,218	20.1

"Small" business locations include all active locations of indeterminate size along with all active locations with 1-49 employees. The locations in the "Indeterminate" category do not maintain an employee payroll, but may have a workforce which consists of contracted workers, family members or business owners.

Source: Statistics Canada, Business Register Division, Business Register Tabulations, 61C0024

Location Counts for Medium Business Locations, December 2012 - Top 10 Industries

Industries - NAICS 2012	Patricia Area CE		Ontario	
	Number	%	Number	%
Total	29	100.0	16,586	100.0
91 - Public administration	5	17.2	336	2.0
81 - Other services (except public administration)	5	17.2	470	2.8
62 - Health care and social assistance	4	13.8	1,381	8.3
44-45 - Retail trade	4	13.8	2,747	16.6
48-49 - Transportation and warehousing	4	13.8	654	3.9
72- Accommodation and food services	3	10.3	2,113	12.7
61 - Educational services	2	6.9	226	1.4
52 - Finance and insurance	1	3.4	542	3.3
11 - Agriculture, forestry, fishing and hunting	1	3.4	218	1.3
21 - Mining, quarrying, and oil and gas extraction	0	0.0	48	0.3
All other industries	0	0.0	7,851	47.3

The "Medium" business locations include all active locations with 50-199 employees.

Location Counts for Large Business Locations, December 2012 - Top 10 Industries

Industries - NAICS 2012	Patricia Area CE		Ontario	
	Number	%	Number	%
Total	6	100.0	3,728	100.0
62 - Health care and social assistance	2	33.3	423	11.3
44-45 - Retail trade	2	33.3	355	9.5
31-33 - Manufacturing	1	16.7	645	17.3
91 - Public administration	1	16.7	250	6.7
11 - Agriculture, forestry, fishing and hunting	0	0.0	22	0.6
21 - Mining, quarrying, and oil and gas extraction	0	0.0	27	0.7
22 - Utilities	0	0.0	27	0.7
23 - Construction	0	0.0	126	3.4
41 - Wholesale trade	0	0.0	163	4.4
48-49 - Transportation and warehousing	0	0.0	178	4.8
All other industries	0	0.0	1,512	40.6

The "Large" business locations include all active locations with 200+ employees.

Source: Statistics Canada, Business Register Division, Business Register Tabulations, 61C0024

APPENDIX A

Census

The census is Canada's largest and most comprehensive data source. The Census of Population collects demographic and linguistic information on every man, woman and child living in Canada. The last census took place in May 2011.

The census is the main source of data available in a standardized format for small areas. It provides nationally comparable data that can be cross-classified to show details. It is also the main body of comprehensive statistical data at the subprovincial level on Canada's population.

The Census of Population is taken to meet statutory requirements. For example, population counts are used to realign the boundaries of federal electoral districts, to calculate transfer payments between levels of government, and to support a variety of programs.

The data are needed by both the public and private sectors to support decision-making in many areas. For example:

- to plan community services such as schools, day care, police services and fire protection
- to forecast consumer demand
- to conduct market research studies.

For 2011, Statistics Canada did not use a mandatory long-form questionnaire as part of the census. Information previously collected by the mandatory long-form census questionnaire was collected as part of the new voluntary National Household Survey (NHS).

The 2011 Census questionnaire consisted of the same eight questions that appeared on the 2006 Census short-form questionnaire, with the addition of two questions on language.

Please visit the following link for more information about the Census of Population:

<http://www12.statcan.gc.ca/census-recensement/2011/ref/index-eng.cfm>

Census Glossary

Age:

Refers to the age at last birthday as of the census reference date, May 11, 2011.

Census Family:

Refers to a married couple (with or without children of either and/or both spouses), a common-law couple (with or without children of either and/or both partners) or a lone parent of any marital status, with at least one child. A couple may be of opposite sex or same sex.

Census Family Structure:

Refers to the classification of census families into married couples (with or without children of either and/or both spouses), common-law couples (with or without children of either and/or both partners), and lone-parent families by sex of parent.

First Official Language Spoken:

This variable was derived within the framework of the application of the *Official Languages Act*. This derivation method is described in the regulations concerning the use of official languages for the provision of public services. It takes into account, first, the knowledge of the two official languages, second, the mother tongue, and third, the home language.

Generation Status:

Generation status refers to whether or not the person or the person's parents were born in Canada. It identifies persons as being first generation, second generation or third generation or more.

1st Generation: Persons born outside Canada.

2nd Generation: Persons born inside Canada with at least one parent born outside Canada.

3rd or more Generation: Persons born inside Canada with both parents born inside Canada.

Labour Force Activity (2006):

Refers to the labour market activity of the population 15 years of age and over in the week (Sunday to Saturday) prior to Census Day (May 16, 2006). Respondents were classified as Employed, Unemployed, or Not in the labour force.

Home Language:

Refers to the language spoken most often or on a regular basis at home by the individual on May 10, 2011.

Mother Tongue:

Refers to the first language learned at home in childhood and still understood by the individual on May 10, 2011.

APPENDIX B

National Household Survey

The 2011 National Household Survey (NHS) provides information about the demographic, social and economic characteristics of Canadians and the dwellings in which they live. The objective of the NHS is to provide data for small geographic areas and small population groups.

Between May and August 2011, Statistics Canada conducted the National Household Survey (NHS) for the first time. This voluntary, self-administered survey was introduced as a replacement for the long census questionnaire, more widely known as Census Form 2B.

Please visit the following link for more information about the National Household Survey:

<http://www12.statcan.gc.ca/nhs-enm/2011/ref/index-eng.cfm>

Global Non-Response Rate

The global non-response rate (GNR) is an indicator of data quality which combines complete non-response and partial non-response to the survey. A smaller GNR indicates a lower risk of non-response bias, i.e., a lower risk of lack of accuracy. Global non-response rates are determined for each of the NHS geographic areas.

National Household Survey Glossary

Aboriginal Identity:

Refers to those persons who reported identifying with at least one Aboriginal group, that is, North American Indian, Métis or Inuit, and/or those who reported being a Treaty Indian or a Registered Indian, as defined by the *Indian Act* of Canada, and/or those who reported they were members of an Indian band or First Nation.

Class of Worker:

Class of worker refers to whether an employed person is an employee or is self-employed. The self-employed include persons with or without a business, as well as unpaid family workers.

Economic Family:

Refers to a group of two or more persons who live in the same dwelling and are related to each other by blood, marriage, common-law, adoption or a foster relationship. A couple may be of opposite or same sex.

Economic Family Total Income:

The total income of an economic family is the sum of the total incomes of all members of that family.

Ethnic Origin:

Refers to the ethnic or cultural origins of the respondent's ancestors. An ancestor is usually more distant than a grandparent.

Full-time or part-time weeks worked in 2010:

Refers to persons who worked for pay or in self-employment in 2010. These persons were asked to report whether the weeks they worked in 2010 were full-time weeks (30 hours or more per week) or not, on the basis of all jobs held.

Generation Status:

Generation status refers to whether or not the person or the person's parents were born in Canada. It identifies persons as being first generation, second generation or third generation or more.

1st Generation: Persons born outside Canada.

2nd Generation: Persons born inside Canada with at least one parent born outside Canada.

3rd or more Generation: Persons born inside Canada with both parents born inside Canada.

Highest Certificate, Diploma or Degree:

Information indicating the person's most advanced certificate, diploma or degree. This is a derived variable obtained from the educational qualifications questions, which asked for all certificates, diplomas and degrees to be reported. The general hierarchy used in deriving this variable (high school graduation, trades, college, university) is loosely tied to the 'in-class' duration of the various types of education.

Household:

Refers to a person or a group of persons (other than foreign residents) who occupy the same dwelling and do not have a usual place of residence elsewhere in Canada. It may consist of a family group (census family) with or without other persons, of two or more families sharing a dwelling, of a group of unrelated persons, or of one person living alone.

Household Total Income:

The total income of a household is the sum of the total incomes of all members of that household.

Household Size:

Number of persons occupying a private dwelling.

Household Type:

Refers to the basic division of private households into family and non-family households. Family household refers to a household that contains at least one census family, that is, a married couple with or without children, or a couple living common-law with or without children, or a lone parent living with one or more children (lone-parent family).

One-family household refers to a single census family (with or without other persons) that occupies a private dwelling. Multiple-family household refers to a household in which two or more census families (with or without additional persons) occupy the same private dwelling. Non-family household refers to either one person living alone in a private dwelling or to a group of two or more people who share a private dwelling, but who do not constitute a census family.

Industry (based on the North American Industry Classification System [NAICS] 2007):

Refers to the general nature of the business carried out in the establishment where the person worked.

Labour Force:

Refers to persons who, during the week of Sunday, May 1 to Saturday, May 7, 2011, were either employed or unemployed.

Labour force = Employed + Unemployed

Early enumeration was conducted in remote, isolated parts of the provinces and territories in February, March and April 2011. When enumeration has taken place before May 2011, the reference date used is the date on which the household was enumerated.

Labour Force Status:

Refers to whether a person aged 15 years and over living in a private household was employed, unemployed or not in the labour force during the week of Sunday, May 1 to Saturday, May 7, 2011.

Early enumeration was conducted in remote, isolated parts of the provinces and territories in February, March and April 2011. When enumeration has taken place before May 2011, the reference date used is the date on which the household was enumerated.

Major Field of Study:

Main subject area of the person's highest postsecondary certificate, diploma or degree classified according to the Classification of Instructional Programs (CIP) Canada 2011.

Occupation (based on the National Occupational Classification [NOC] 2011):

Refers to the kind of work performed by persons during the week of Sunday, May 1 to Saturday, May 7, 2011, as determined by their kind of work and the description of the main activities in their job.

Place of Birth:

Refers to the province or territory where the respondent was born, for respondents who were born in Canada, or to the country where the respondent was born, for respondents born outside Canada.

Place of Work Status:

Classification of respondents 15 years of age and over in private households who worked at some time since January 1, 2010 according to whether they worked at home, worked outside Canada, had no fixed workplace address, or worked at a specific address (usual place of work).

Prevalence of Low Income:

Proportion or percentage of persons, economic families, persons not in an economic family aged 15 years or over or households in low income according to one of the low-income lines.

Income status can be measured in several different ways in household surveys. For the standard products of the National Household Survey, the line chosen is a relative measure: the after-tax low-income measure (LIM-AT).

For this measure, the income used is after-tax income of households. There are no regional variations to account for prices or cost of living differences: all applicable households in Canada face the same line adjusted for household size. This line is set at half the median of adjusted household after-tax income. To account for potential economies of scale, the income of households with more than one member is divided by the square root of the size of the household.

All household members are considered to share the household income and are attributed the same income status.

Recent Immigrants:

Recent immigrants are immigrants who landed in Canada between January 1, 2006 and May 10, 2011.

Total Income:

Total of income from all sources, including employment income, income from government programs, pension income, investment income and any other money income.

Visible Minority Group:

Refers to the visible minority group to which the respondent belongs. The Employment Equity Act defines visible minorities as 'persons, other than Aboriginal peoples, who are non-Caucasian in race or non-white in colour'.

APPENDIX C

Small Area and Administrative Data (SAAD)

From the income tax forms submitted each year by Canadians, the Annual Estimates for Census Families and Individuals (T1 Family File) produces a wealth of economic and demographic information for use by both the private and public sectors. Close to 26 million records were processed in 2011 to provide the most detailed and accurate data possible. In fact, the information represents nearly 95% of the Canadian population.

Glossary:

Economic Dependency Ratio (EDR):

For a given area, the EDR is the ratio of transfer dollars to every \$100 of total employment income. For example, where a table shows an EDR of 12.1, it means that \$12.10 was received in transfer payments for every \$100 of employment income for that area.

Employment Income:

Employment income includes wages and salaries, commissions from employment, training allowances, tips and gratuities, self-employment income (net income from business, profession, farming, fishing and commissions) and Indian employment income (new in 1999).

Employment Insurance (EI) *Previously Unemployment Insurance (UI)*

Comprises all types of benefits paid to individuals under this program, regardless of reason, including regular benefits for unemployment, fishing, job creation, maternity, parental/adoption, retirement, self-employment, sickness, training and work sharing.

Median:

Is the middle number in a group of numbers. Where a median income, for example, is given as \$26,000, it means that exactly half of the incomes reported are greater than or equal to \$26,000, and that the other half are less than or equal to the median amount. Median incomes in the data tables are rounded to the nearest hundred dollars and starting with 2007 to the nearest ten dollars. Zero values are not included in the calculation of medians for individuals, but are included in the calculation of medians for families.

Self-Employment Income:

Is the net income from business, a profession, commissions, farming and fishing.

Social Assistance

Includes payments made in the year on the basis of a means, needs or income test (whether made by an organized charity or under a government program). The value is reported on line 145 of the personal income tax return.

Please visit the following link for more information about this data set and definitions:
<http://www.statcan.ca/bsolc/english/bsolc?catno=17-507-X>

APPENDIX D

Canadian Business Patterns

Canadian Business Patterns provides accurate and complete counts of active locations by employment size range by industry classification. These counts can be used to study economic activity and market potential in the CFDC.

The top 10 NAICS categories are provided. Data is provided for the total active statistical locations as well as small, medium and large active statistical locations. Counts are also provided for locations where the number of employees is indeterminate.

Statistical Location

The location is an operating entity, specifically a production entity which:

- (a) Conducts economic activity at or from a single physical location or group of locations;
- (b) Resides within the smallest standardized geographical area;
- (c) Is able to provide employment data at a minimum.

Please visit the following link for more information about this data source:

http://www23.statcan.gc.ca/imdb/p2SV.pl?Function=getSurvey&SDDS=1105&Item_Id=51930&lang=en