



CITY POLICY

**SECTION: ENVIRONMENTAL SERVICES
AND CONSERVATION**

NO: EN-TC-01

**REFERENCE: TREE CANOPY AND NATURAL
VEGETATION**

Date: September 26, 2022

Review Date: September 2024

TITLE: TREE CANOPY AND NATURAL VEGETATION

1.0 POLICY STATEMENT

1.1 BACKGROUND

Section 270 (1) (7) of the *Municipal Act*, 2001, S.O. 2001, c.25 requires a municipality to adopt a plan which describes how to protect and enhance the tree canopy and natural vegetation.

2.0 PURPOSE

2.1 The purpose is to offer a summary understanding of local vegetation, conservation considerations and to promote best practices for a sustainable tree canopy in the municipality's settlement areas as well as on its shorelines and rural residential properties.

2.2 This policy applies to all properties and development, on public and private lands, in the City of Dryden. It is a resource which can be referred to and utilized as a guiding principle for residential, commercial and municipal purposes.

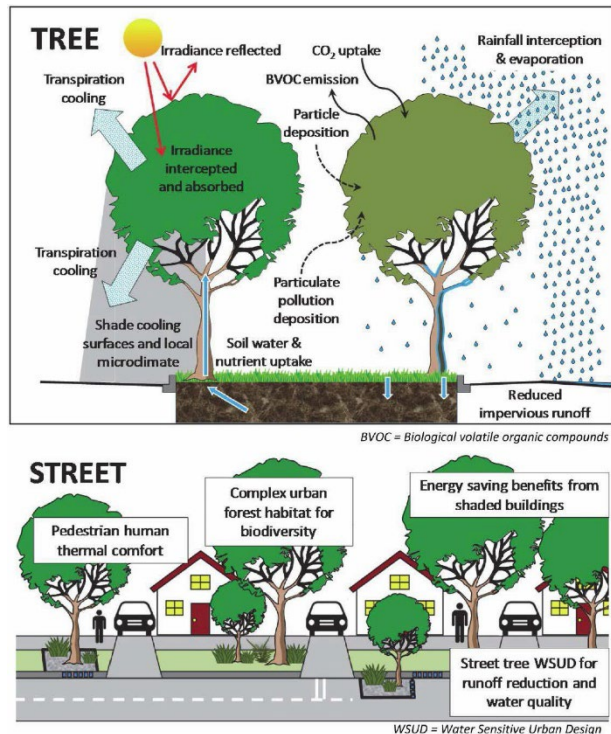
3.0 DEFINITIONS

3.1 WHAT IS A TREE CANOPY?

"Tree canopy" or "tree cover" includes all areas of coverage by plant material exceeding 1.5 metres in height, and the extent of tree canopy in excess of 10 years maturity. The canopy includes the layer of leaves, branches and stems that cover the ground when viewed from above.

3.2 BENEFITS

- A mature urban tree canopy creates shade, which lowers energy consumption for a community and is accomplished via the direct link of shading properties and the buildings therein;
- Reduced air pollution;
- Increased property value;
- Providing shelter for wildlife;
- Improved usability of public works;
- Improved aesthetics of properties;
- Assisting in stormwater management; and,
- Preventing erosion, especially along slopes.



4.0 GUIDELINES

4.1 NATIVE PLANTINGS

When Planting any vegetation, local species/native vegetation is recommended to be utilized.

4.2 WHERE TO PLANT

Consideration should be given to where trees and vegetation are planted. Prior to planting a tree, property lines, utilities (power lines, buried water/sewer laterals or other 'hard' infrastructure) should be considered. The location of a tree should take into account its future size as it relates to a building's foundation and roof.

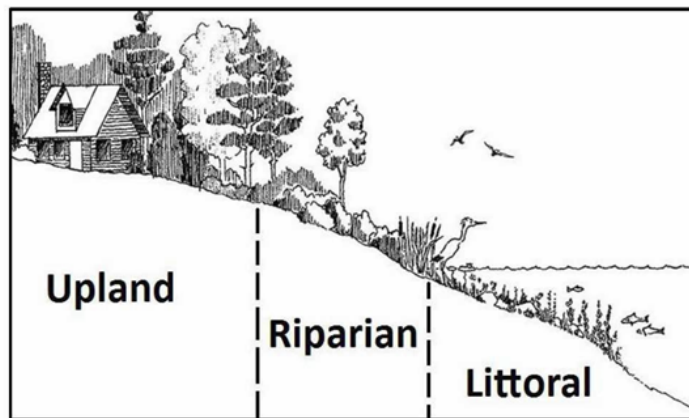
4.3 SHORELINE VEGETATION

Vegetated areas adjacent to watercourses, lakes, rivers and wetlands are known as shoreline buffers. Shoreline buffers protect water from pollutants by filtering contaminants, providing habitat for native species and preventing shoreline erosion.

4.3.1 Shoreline buffers are recommended to:

- Be at least 20 metres upland from the shore (or greater as recommended by the Ministry of Natural Resources and Forestry).
- Be composed of natural vegetation with a broad corridor of undisturbed vegetation.
- Not be grassed.
- Avoid shoreline hardening.

4.3.2 The types of vegetation by zone are illustrated below.



5.0 MAINTENANCE AND PRESERVATION

- 5.1 Trees and vegetation require special care and treatment. If it appears the vegetation is struggling, it is recommended you speak to a professional.

6.0 COMMERCIAL/INDUSTRIAL USES

- 6.1 In addition to this policy applying to single detached homes and smaller residential uses, it can also provide guidance to commercial/multiple residential developments. In addition to the benefits listed previously, increased vegetative buffers help beautify commercial properties and match the natural beauty of the City of Dryden.

7.0 OTHER BENEFITS

7.1 Other benefits that can be considered

- Green parking lots to reduce stormwater flows and the costs of stormwater maintenance.
- Vegetated aisles and parking islands to increase shaded areas and reduce micro climates.
- Green roofs to reduce total stormwater runoff and enhance the urban canopy.

8.0 DISCLAIMER

- 8.1 This policy does not take priority over any by-laws, resolutions or agreements of the City of Dryden Council.

History			
Approval Date:	August 24, 2020	Approved by:	By-law 4758-2020
Review/Amendment Date:	September 26, 2022	Approved by:	CAO
Review/Amendment Date:		Approved by:	